

CENTRIFUGAL IN LINE FANS FOR CIRCULAR DUCTS

Series
FV-D



FV-D 200

giri 2900 // rpm 2900

DELIVERY MC/H

	w	db(A)	m3/h	50	100	150	200	250	300	350	400	450	500	550	600	650	700	750	800	
FV-D 100	58	47	260	29	25	16	9	2,5												
FV-D 125	58	47	360	30	27,5	22	17	11,5	6	2										
FV-D 160A	58	50	410	31	29	25	20	15	10	6	2									
FV-D 160B	75	51	560			29	28	26	23	20	17	14	11	8	5	3	1			

giri 2900 // rpm 2900

DELIVERY MC/H

	w	db(A)	m3/h	200	300	400	500	600	700	800	900	1000	1100	1200	1300	1400	1500	1600	1700	
FV-D 200	75	52	690	28	25	19	13	8	2											
FV-D 250	135	54	990	45	41	36	30	25	20	15	10	5	1							
FV-D 315A	155	55	1260		45	41	38	35	32	28	24	20	16	11	6	1				
FV-D 315B	225	56	1750		55	52	49	46	43	40	37	34	30	26	21	16	11	7	2	

Sito Web



Catalogo Generale



Feit Pompe S.r.l.

Via Venezia, 34/g - 10088 - Volpiano (TO) - ITALIA

Tel: +39 (0)11 9884327 - info@feit.srl - feit.srl

FEIT
1946
Evolving with you...

CENTRIFUGAL IN LINE FANS FOR CIRCULAR DUCTS

Series
FV-D

CHARACTERISTICS

- Casing in weather proof steel sheet.
- Steel sheet motor supports with airflow straighteners.
- External rotor motor IP44 protection ISO B, speed adjustable by electronic speed regulator. High efficiency backward blade impeller.
- Terminal box in techno-polymer.

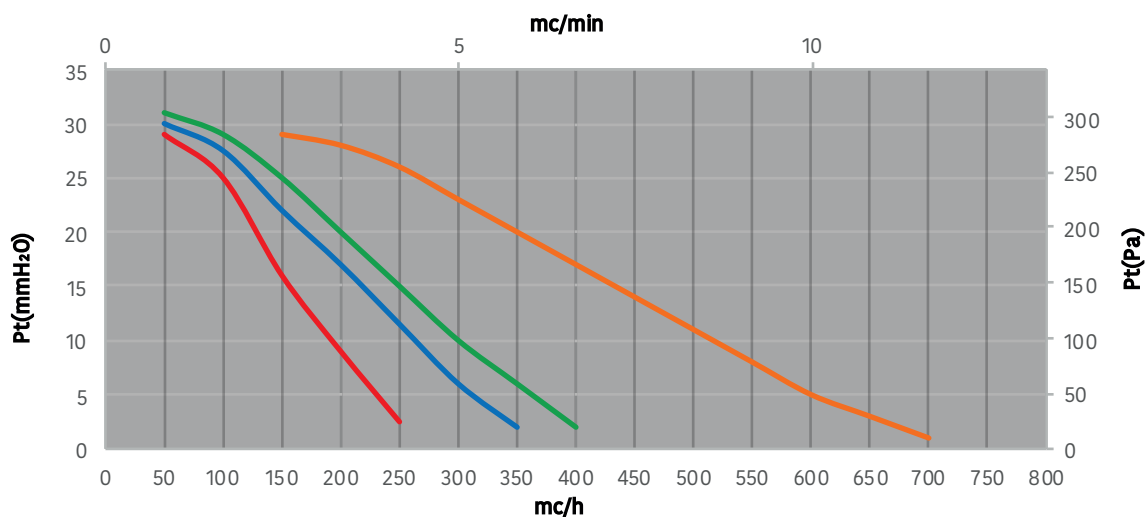
Its compact steel structure, external rotor motor and centrifugal backward bladed impeller ensure:

- easy installation
- flexible working by adjusting the rpm
- high efficiency
- sturdiness and reliability

APPLICATIONS

- FV D line is ideal to intake or exhaust air through circular ducting in: public locals, offices, shops, bars,

pools, laboratories, kitchens, toilets, workshops, restaurants etc.



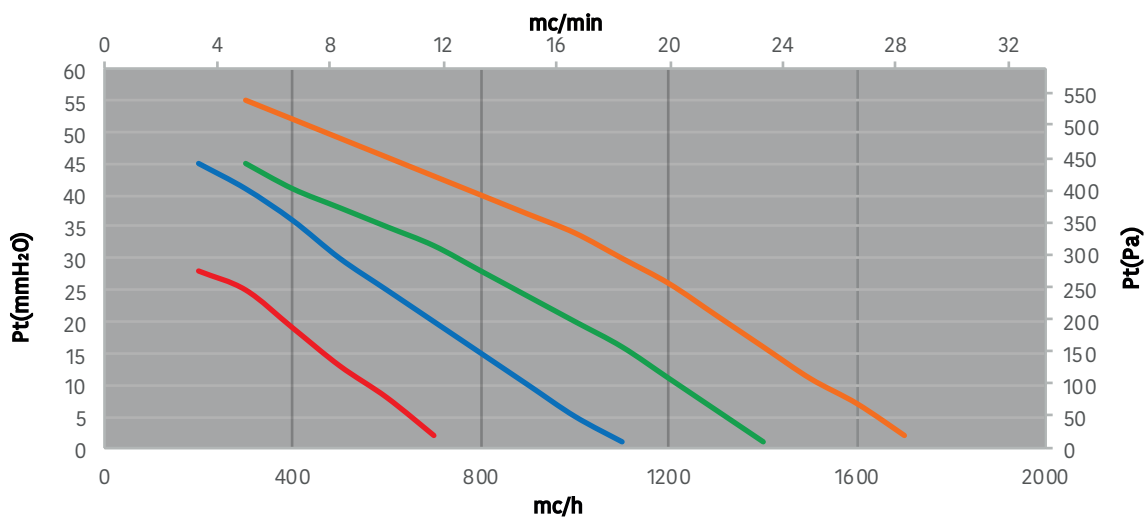
	VOLT	RPM
FV-D 100	230m	2900
FV-D 160B	230m	2900

	VOLT	RPM
FV-D 125	230m	2900

	VOLT	RPM
FV-D 160A	230m	2900

CENTRIFUGAL IN LINE FANS FOR CIRCULAR DUCTS

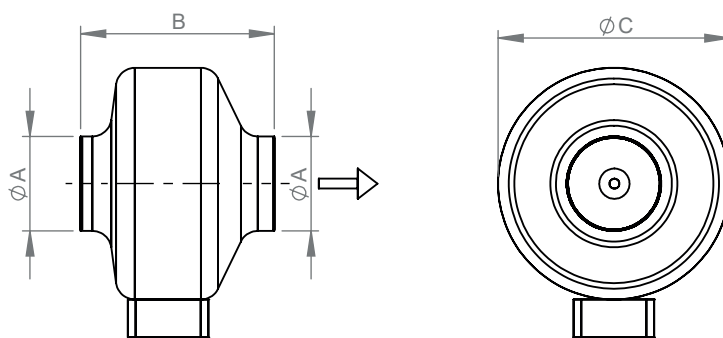
Series
FV-D



	VOLT	RPM
FV-D 200	230m	2900
FV-D 315B	230m	2900

	VOLT	RPM
FV-D 250	230m	2900

	VOLT	RPM
FV-D 315A	230m	2900



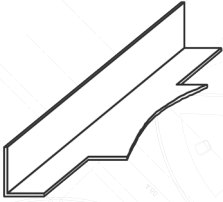
	ØA	B	ØC	Kg *
FV-D 100	100	205	245	3
FV-D 125	125	205	245	3
FV-D 160A	160	205	245	3
FV-D 160B	160	230	345	4
FV-D 200	200	220	345	5
FV-D 250	250	230	345	5
FV-D 315A	315	250	405	7
FV-D 315B	315	260	405	7

Dimensions in mm * Indicative

SB

WALL BRACKETS

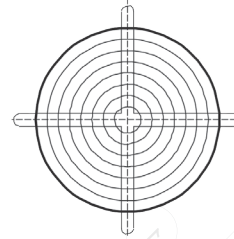
To be used to fix the fan on the wall



RG

PROTECTION GRID

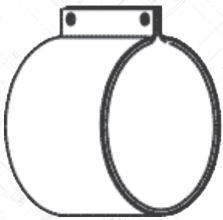
Required to prevent accidental contact with rotation parts. mandatory for free air



FA

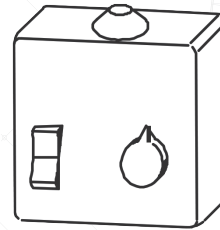
HOSE CLAMP

To be used to connect the fan to the ducting.



SRE

SPEED



SH

HUTTER

Backdraught butterfly shutter



Sito Web



Catalogo Generale



Feit Pompe S.r.l.

Via Venezia, 34/g - 10088 - Volpiano (TO) - ITALIA
Tel: +39 (0)11 9884327 - info@feit.srl - feit.srl

**FEIT**
1946
Evolving with you...